

Salisbury Area Board

End of Year Report

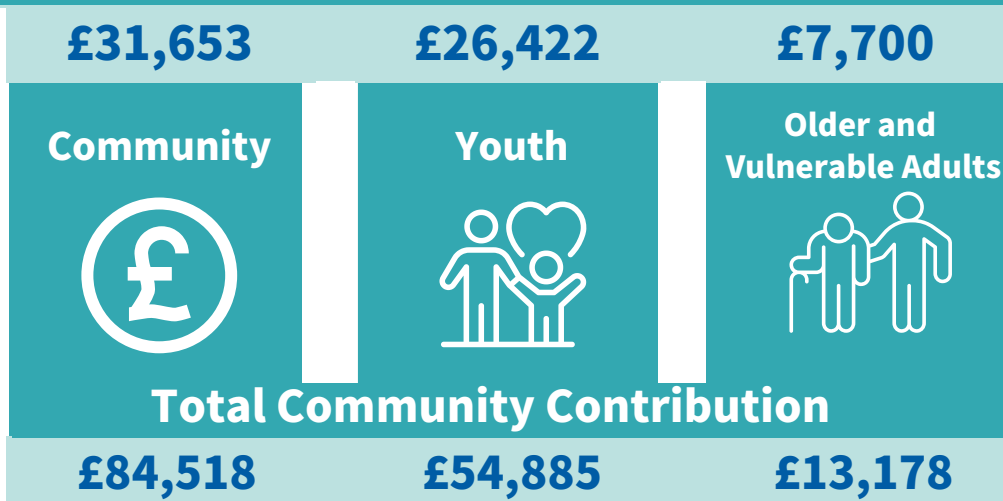
April 2023 - March 2024



Area Board Investment

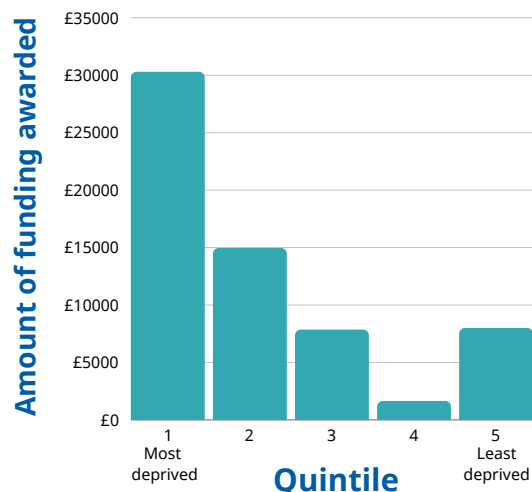
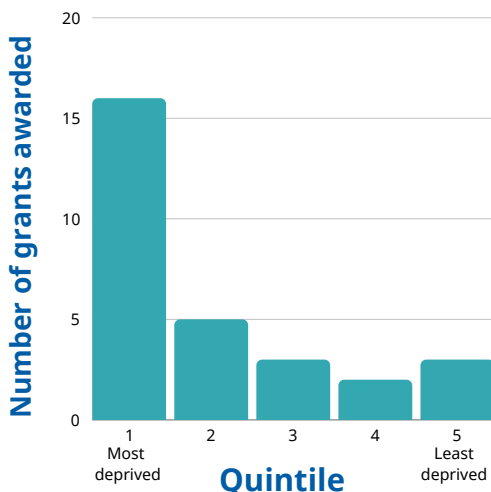
The Area Board invests in local community projects and initiatives that meet local priorities and deliver exceptional outcomes for residents. The Area Board aims to work in partnership to achieve maximum value for its investment.

Total Area Board Investment



The total amount invested in projects through additional community contribution, from fundraising, grants, services in kind or volunteering

Investment by deprivation quintile



Local Priorities

The Salisbury Area Board reviewed available local data and evidence and integrated this with local knowledge and community conversation to agree the following local priority themes. The Area Board has undertaken a series of more specific local actions to positively address them, including the key achievements below:

Youth engagement, employment and positive activity opportunities



The Salisbury Area Board has supported and funded multiple local youth organisations and events. Developed and supported the Salisbury Youth Forum to create a new YOU network to provide safe spaces for young people in Salisbury and the surrounding areas.

Addressing climate change

The Salisbury Area Board continues to facilitate the local Environment group to focus action on flooding, air quality management and active travel. Facilitated a volunteer led group to manage the Five Rivers Community garden to come together to engage with nature locally and consider the wider environment. Investment and support in our local community gardens and environmental initiatives.



Supporting positive mental health and wellbeing



Funded and facilitated an extensive range of initiatives across the city, including Safer and Supportive Salisbury, Celebrating Age and Alzheimer's Support. Hundreds of older and vulnerable adults have connected with the Silver Salisbury programme to reduce social isolation and loneliness and a range of events have engaged our local carers, co-ordinated by the Area Boards Older People's Champion and Carer's Champion. Facilitated and led the Five to Thrive community project to help residents, groups and partners to increase levels of mental health and resilience in the face of stress and every day trauma.

Supporting under represented groups

The Salisbury Area Board developed, funded and printed 15,000 cost of living support flyers, working in partnership with the city council and a wide range of community groups and organisations to provide food, financial and wellbeing support. Continued to facilitate the Salisbury Foodie network to support those most in need and invested in local organisations supporting under-represented residents.



Improving transport and access



The Salisbury Area Board Underpasses working group has supported the community led women's safety project of conducting night time street light audits, supported access audits with the Disability Interest Group of the underpasses and delivered community art work projects. The Area Board facilitated the Highways Matters event focussing on topics such as highway improvements, maintenance, congestion, speeding, active travel and improvement schemes.

Engagements

The Salisbury Area Board works alongside other organisations to make things happen in the local community. These groups include the city council, voluntary and community groups, youth organisations, sports clubs and local charities.

The Area Board wouldn't be able to achieve what they do without these partners working on the ground with them. The Area Board hosts regular business meetings, engagement activities, events, surveys and working groups to stimulate and support local community action.

Area Board
Business meetings

4



Attendances

171

Area Board
working groups

3



Attendances

132

Engagements/
events/ activities

13



Attendances

334

Local Highways and Footpath Infrastructure group

The LHFIFG is a sub group of the Salisbury Area Board, which deals specifically with highway issues. They aim to find solutions for local transport issues, such as road repairs, traffic problems, road layouts and parking. The amount allocated is dependent on the geographical size and population for the community area and the funding allocation is for capital expenditure and can be used to provide new and improved highway infrastructure.

LHFIFG meetings

4



Attendances

50



£26,140

LHFIFG projects
completed

9

